

TRIOFLEXTM

THE IDEAL CHOICE OF INDOOR VINYL SPORTS FLOORING

THE IDEAL CHOICE OF INDOOR VINYL SPORTS FLOORING

Trioflex series is high-end line of indoor sports flooring which is purpose-built to meet the requirement of high performance indoor sports flooring for indoor sports gym, sports halls and recreation venues.

The high performance and healthy material will bring athletes wonderful experience in daily sports or physical activity, offering the right balance of protection, safety, comfort and aesthetic pleasure.



PRODUCT SELECTION GUIDANCE

Protection is the major property of the sports flooring that reduces the immediate injuries risks when the athletes play on the floor.

Trioflex provides the right solution and the best protection for all users.

IPI=IMPACT PROTECTION INDEX	
≤50%	low protection
50% <IPI ≤ 80%	medium protection
>80%	high protection



High impact surface area, high IPI floors.



Small surface impact area, low IPI floors, high risks of immediate injuries.

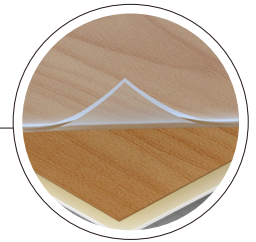


APPLICATIONS	P1	P2	P3	
	DMD FLOOR 60	DMD FLOOR 80	DMD FLOOR 90	DMD FLOOR 120
TODDLERS(0-6YEARS OLD)	<div><div></div><div></div></div>	<div><div></div><div></div><div></div><div></div></div>	<div><div></div><div></div><div></div><div></div></div>	<div><div></div><div></div><div></div><div></div><div></div></div>
EDUCATION	<div><div></div><div></div><div></div></div>	<div><div></div><div></div><div></div><div></div></div>	<div><div></div><div></div><div></div></div>	<div><div></div><div></div><div></div><div></div><div></div></div>
CLUBS/COMPETITIONS	<div><div></div><div></div></div>	<div><div></div><div></div><div></div><div></div><div></div></div>	<div><div></div><div></div><div></div><div></div><div></div></div>	<div><div></div><div></div><div></div><div></div><div></div></div>
ADULTS/SENIORS/LEISURE	<div><div></div><div></div><div></div></div>	<div><div></div><div></div><div></div><div></div></div>	<div><div></div><div></div><div></div><div></div></div>	<div><div></div><div></div><div></div><div></div><div></div></div>
MULTIPURPOSE	<div><div></div><div></div><div></div><div></div><div></div></div>	<div><div></div><div></div><div></div></div>	<div><div></div><div></div><div></div></div>	<div><div></div><div></div></div>

UNIQUE TECH

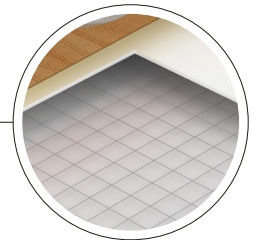
1 The unique GS tech treatment offers two key benefits

The Glaze® surface treatment makes the best balance between slide and grip when the athletes play on it. Our patent surface treatment solves the shoes mark problem, making the flooring easy to clean and maintain and largely reduces the maintenance cost.



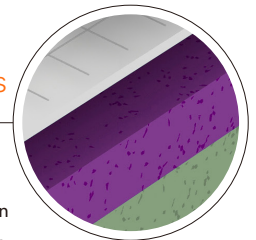
2 The unique DW tech provides stability & durability

The reinforced unwoven polyester mesh, matched the super tenacity unwoven glass fiber layer, makes the flooring very stable in size (the size changing rate under 0.1%) and has an indentation resistance.



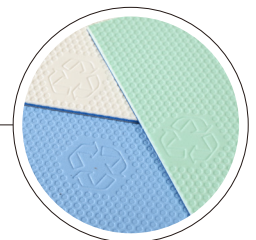
3 The unique HD tech makes you enjoy the sports

The high-density "closed-cell foam technology" makes the flooring with best shock absorption, which is much higher than other products based on the same thickness.

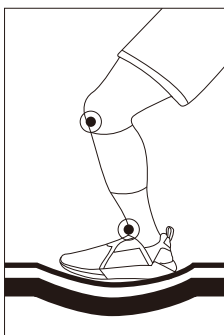


4 The unique AM tech prevents the flooring moving

The hexagon designed of backing, with strong grip force prevent the flooring moving.



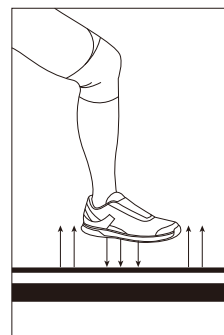
SPORTS FEATURES



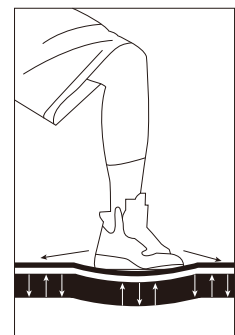
Protection & Safety



Surface Friction

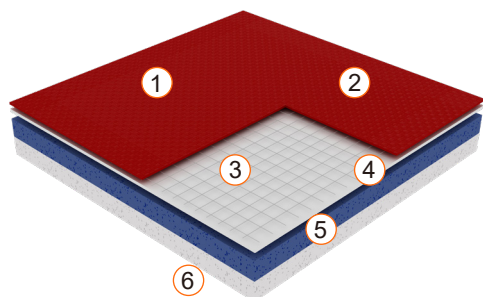


Vertical Deformation



Shock Absorption

TABLE TENNIS FLOORING



- 1 – Specific engineered surface embossing
- 2 – Pure vinyl wear layer
- 3 – Mesh glass fibre
- 4 – Reinforced layer
- 5 – High-density closed-cell foam layer
- 6 – Engineered honeycomb backing



SU5.0



Overall thickness: 5.0mm

Width: 1.8m Length: 20m

Tech: DW | GS | HD | AM

Other thickness can be customized

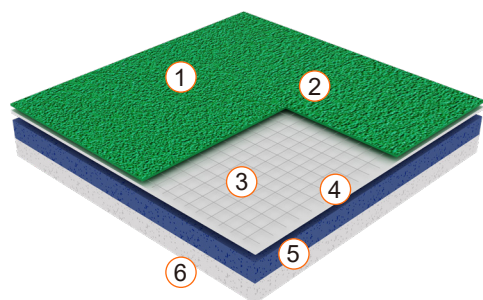


SU5.0B



SU5.0P

BADMINTON FLOORING



- 1 – Specific engineered surface embossing
- 2 – Pure vinyl wear layer
- 3 – Mesh glass fibre
- 4 – Reinforced layer
- 5 – High-density closed-cell foam layer
- 6 – Engineered honeycomb backing



RE4.5



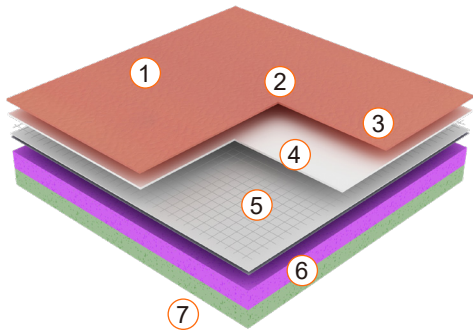
Overall thickness: 4.5mm

Width: 1.8m Length: 15m

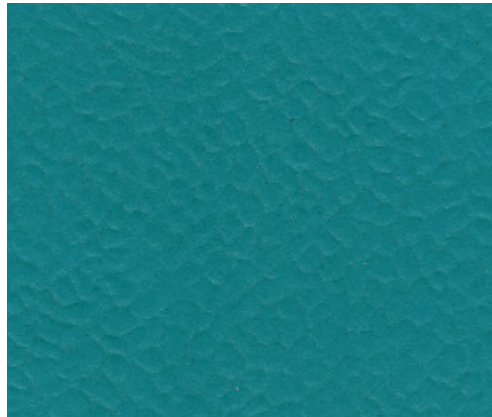
Tech: DW | GS | HD | AM

Other thickness can be customized

VOLLEYBALL FLOORING



- 1 – Glaze+ surface treatment
- 2 – Specific engineered surface embossing
- 3 – Pure vinyl wear layer
- 4 – Reinforced layer
- 5 – Mesh glass fibre
- 6 – High-density closed-cell foam layer
- 7 – Engineered honeycomb backing



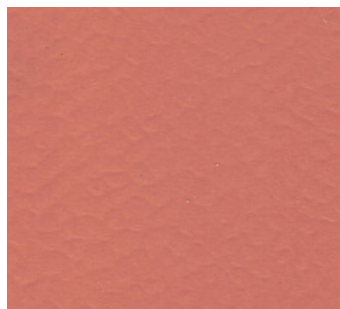
9431

Overall thickness: 7.0mm

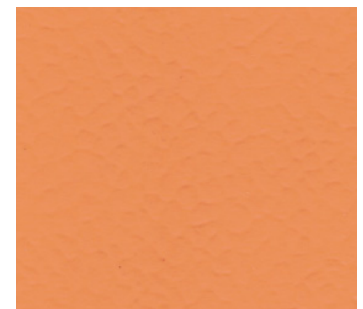
Width: 1.8m

Tech: DW | GS | HD | AM

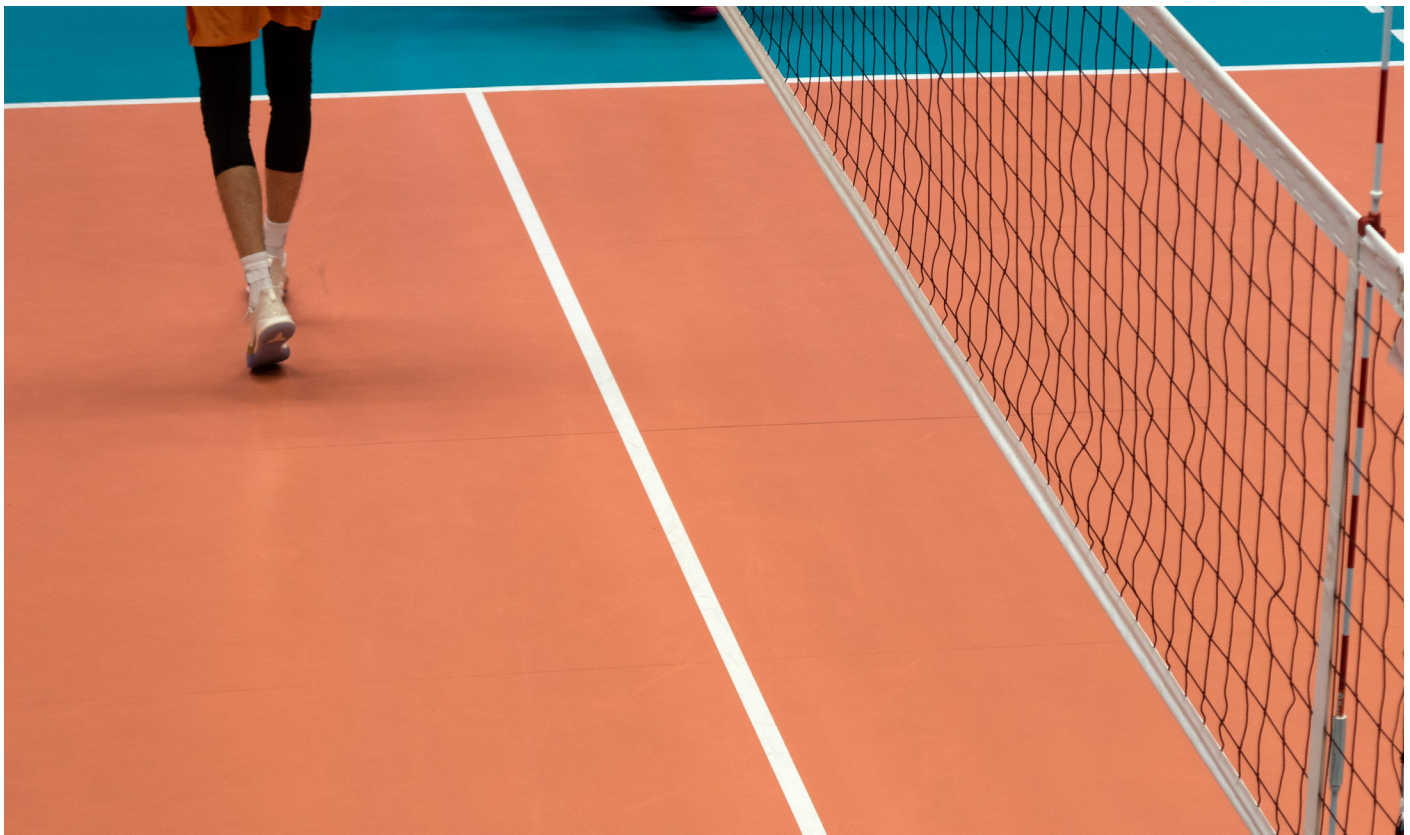
Other thickness can be customized



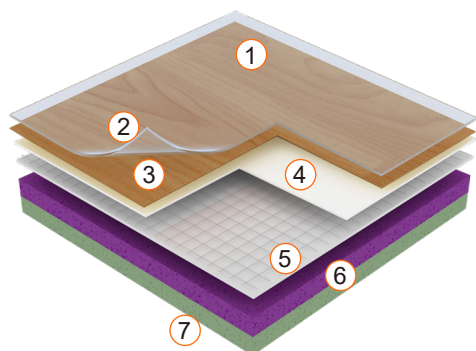
9146



9134



BASKETBALL FLOORING



- 1 – Glaze* surface treatment
- 2 – Pure transparent vinyl wear layer
- 3 – Dynamic colors and realistic decor Film
- 4 – Reinforced layer
- 5 – Mesh glass fibre
- 6 – High-density closed-cell foam layer
- 7 – Engineered honeycomb backing



8105



Overall thickness: 6.0mm

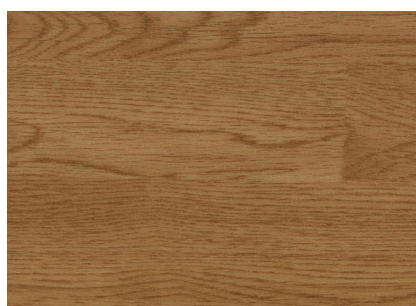
Width: 1.8m

Tech: DW | GS | HD | AM

Other thickness can be customized



8014



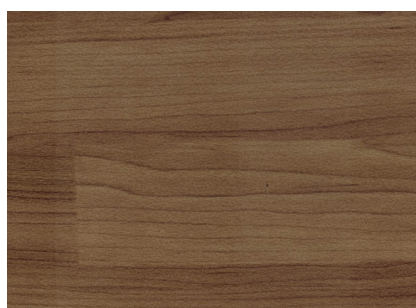
8016



8020



8106

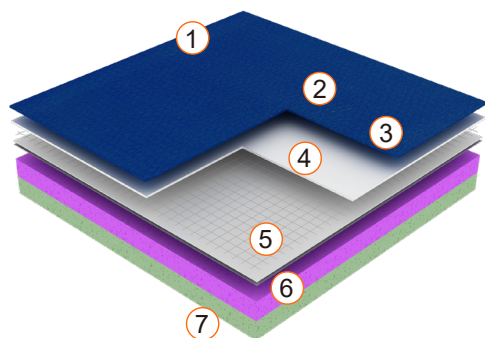


8107



8109

MULTI-PURPOSE FLOORING



- 1 – Glaze+ surface treatment
- 2 – Specific engineered surface embossing
- 3 – Pure vinyl wear layer
- 4 – Reinforced layer
- 5 – Mesh glass fibre
- 6 – High-density closed-cell foam layer
- 7 – Engineered honeycomb backing



9430

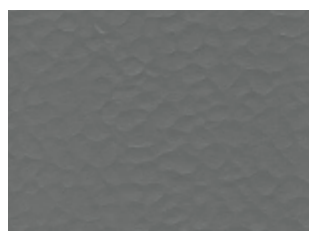


Overall thickness: 8.0mm

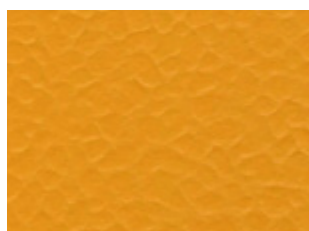
Width: 1.8m

Tech: DW | GS | HD | AM

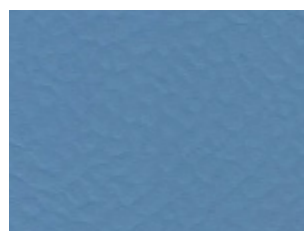
Other thickness can be customized



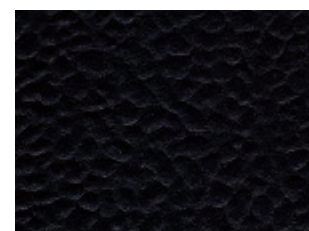
9432



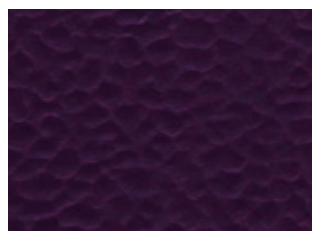
9135



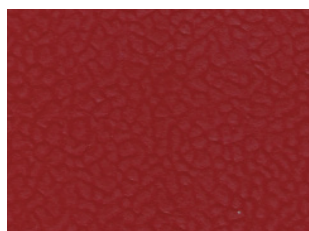
9445



9433



9136



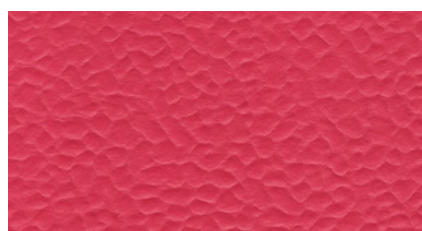
9183



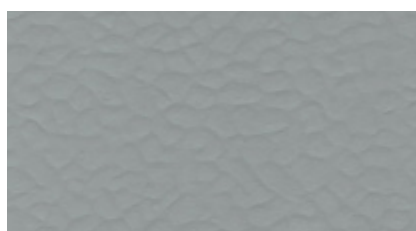
9519



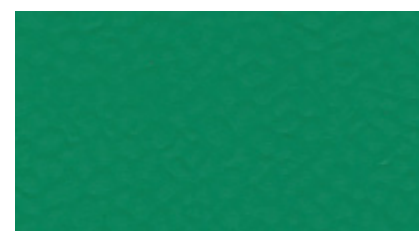
9347



9559



9758



9570

TRIOFLEX™ TECHNICAL DATA

TECHNICAL DATA	STANDARD	UNIT	REQUIREMENTS	BADMINTON	TABLE TENNIS	VOLLEYBALL	MULTIPURPOSE			
MODEL	-	-	-	RE4.5	SU5.0	V7.0	DMD FLOOR 60	DMD FLOOR 80	DMD FLOOR 90	DMD FLOOR 120
STRUCTURAL PARAMETERS										
THICKNESS	EN 428	mm	-	4.5	5.0	7.0	6.0	8.0	9.0	12.0
WIDTH	EN 426	m	-	1.8	1.8	1.8	1.8	1.8	1.8	1.8
LENGTH	EN 426	m	-	15	20	MAX20	MAX20	MAX20	MAX20	MAX15
SPORTS PROPERITIES										
SHOCK ABSORPTION	EN 14808	%	≥25	-	-	P1	P1	P2	P2	P3
VERTICAL DEFORMATION	EN 14809	mm	≤3.5	≤2	≤2	≤2	≤2	≤2	≤2	≤2
BALL BOUNCE	EN 12235	%	≥90	≥90	≥90	≥90	≥90	≥90	≥90	≥90
SLIDING COEFFICIENT	EN 13036-4	-	80-110	80-110	80-110	80-110	80-110	80-110	80-110	80-110
TECHNICAL CHARATERRISTICS										
ABRASION RESISTANCE	EN ISO 5470-1	mg	≤1000	≤100	≤100	≤100	≤100	≤100	≤100	≤100
INDENTATION RESISTANCE	EN 1516	mm	≤0.5	≤0.5	≤0.5	≤0.5	≤0.5	≤0.5	≤0.5	≤0.5
ROLLING LOAD	EN1569	N	≥1500	≥1500	≥1500	≥1500	≥1500	≥1500	≥1500	≥1500
CLASSIFICATION										
FIRE RESISTANCE	EN 13501-1	-	-	CFL-S1	Cfl-S1	Cfl-S1	Cfl-S1	Cfl-S1	Cfl-S1	Cfl-S1
CE MARKING										
				CE	CE	CE	CE	CE	CE	CE



TRIOFLEX™



CONTACT US

Boker New Material Tech Co., Ltd | www.bksportsflooring.com | info@bkflor.com

Note: There may be some differences between the samples and the real objects, please refer to the real objects. There will be no additional notification if the product technical data is updated. Boker company reserves the right of final interpretation.